

# splash



## INSTALLATION GUIDE

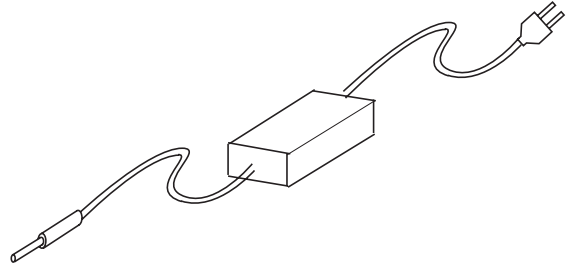
**MODEL: T-WTV/17**  
**WATERPROOF LCD TV**

## Contents of Carton

Ensure that the following accessories are included with your TV.  
if any accessory is missing, please contact the dealer where you purchased the product



**Remote Control**

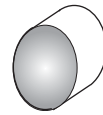


**Power Cord**

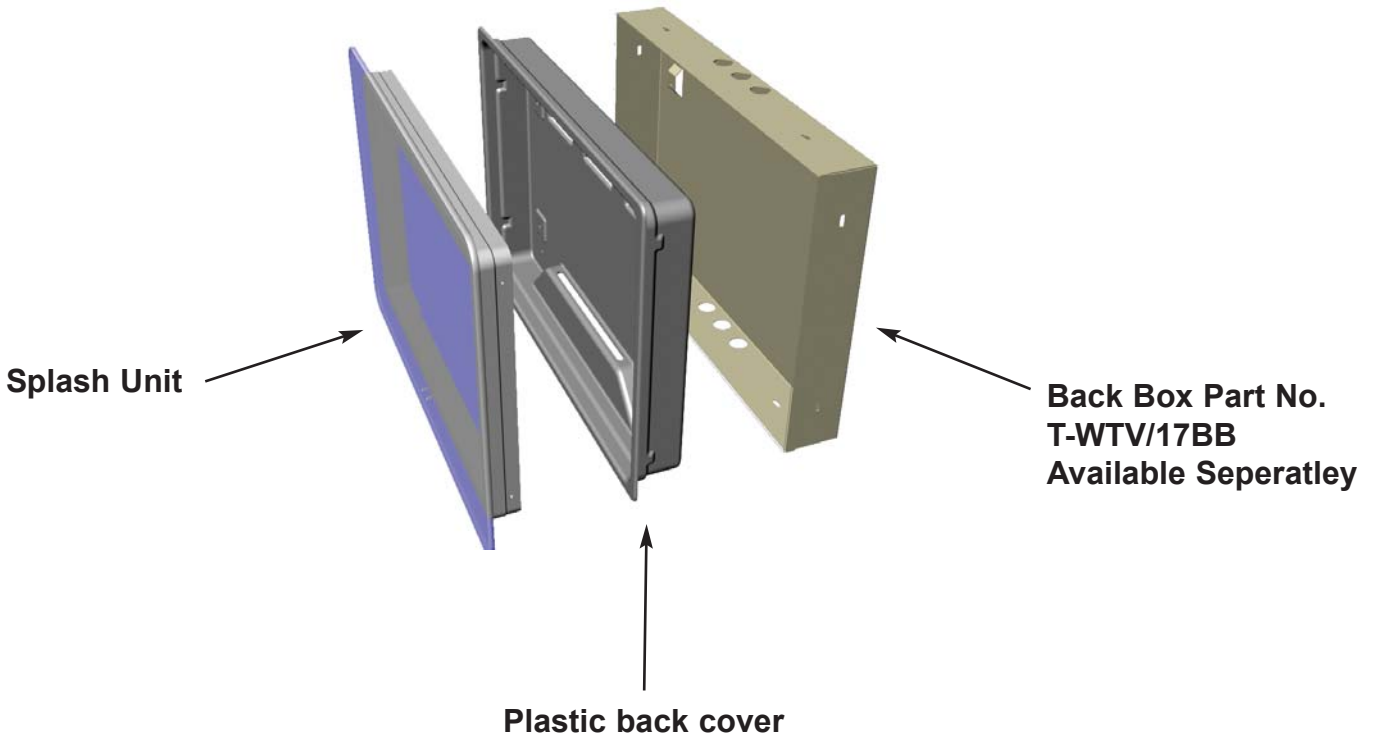
**Owners Manual**



**Video Balun Cable**



**Magnet x4  
& Fixings**



**Splash Unit**

**Plastic back cover**

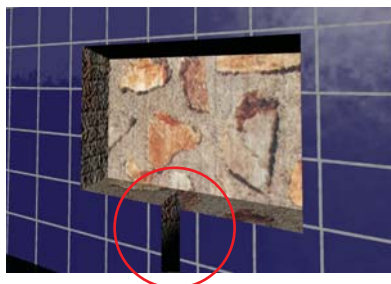
**Back Box Part No.  
T-WTV/17BB  
Available Separately**

# Installation

## Basic Fitment



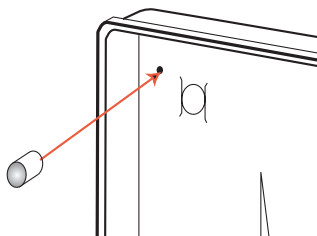
1. Cut hole in wall to suit steel back box (451mm wide x 309mm high x 60mm deep)



2. Run cables to adaptor. Power supply should be placed close to power source. ensure cables are run for your particular-requirements.



3. Install steel back box making sure the steel box is perfectly level (horizontally) and the front edge of the steel box must be flush with your finished surface.



4. Attach pot magnets to the inside of the plastic back cover using screws supplied.



5. Holding the back cover in place pull cables through plastic back cover.

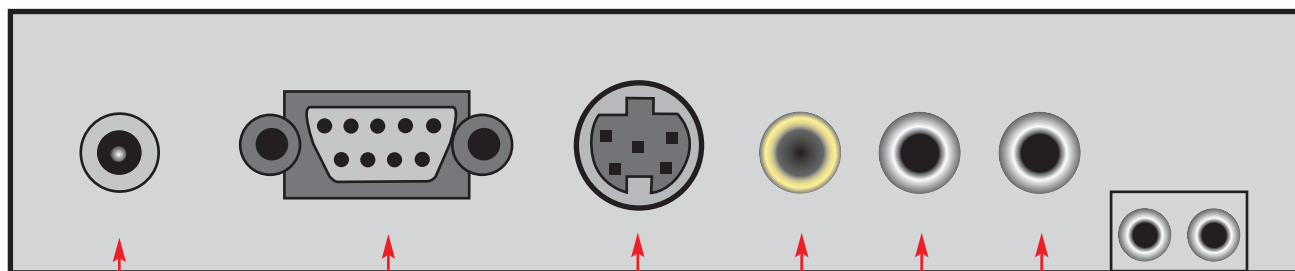


6. Run a large bead of water proof silicon sealant around outer flange of plastic back cover and screw into metal wall box making sure plastic back box seals all round the finished surface/wall/tiles .



7: Carefully holding splash screen, connect cables into back of splash screen.

8: Slide/push the splash screen back into the plastic back box until you hear the magnets take grip.



AC Input  
Only use power supply supplied in box

RS-232C Port  
PC Connection

S-Video

Video in

Audio in

Audio in

Audio Pre in

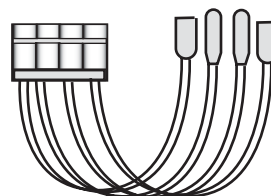
Audio Pre out /SPKR



FM In

Outdoor antenna or modulated signal.  
(Use RF Coaxial wire 75 OHM)

4 connection to pasive spkr



Video Balun for connection to systemline moduar  
(Internal Video cable must be connected)



Video Balun

